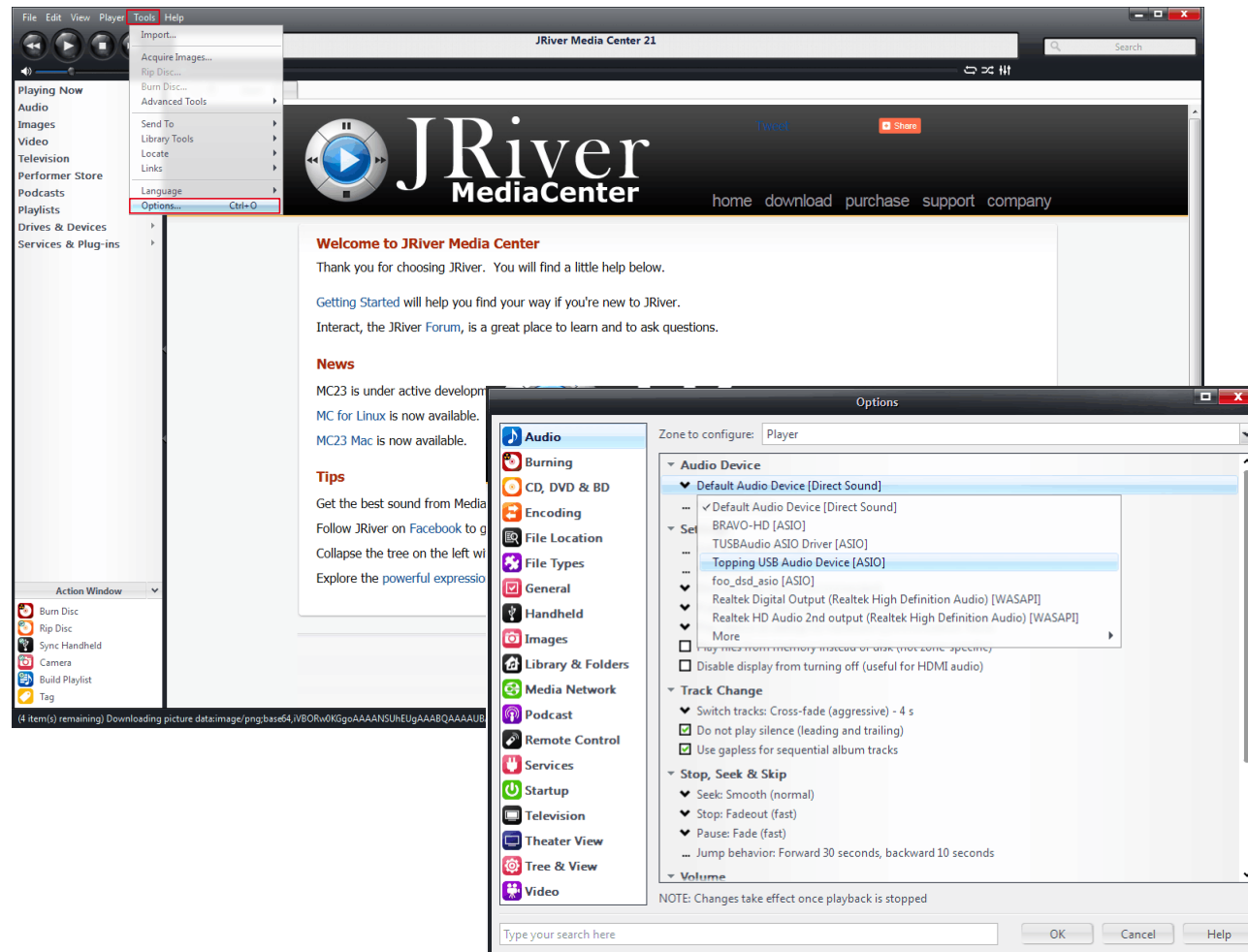


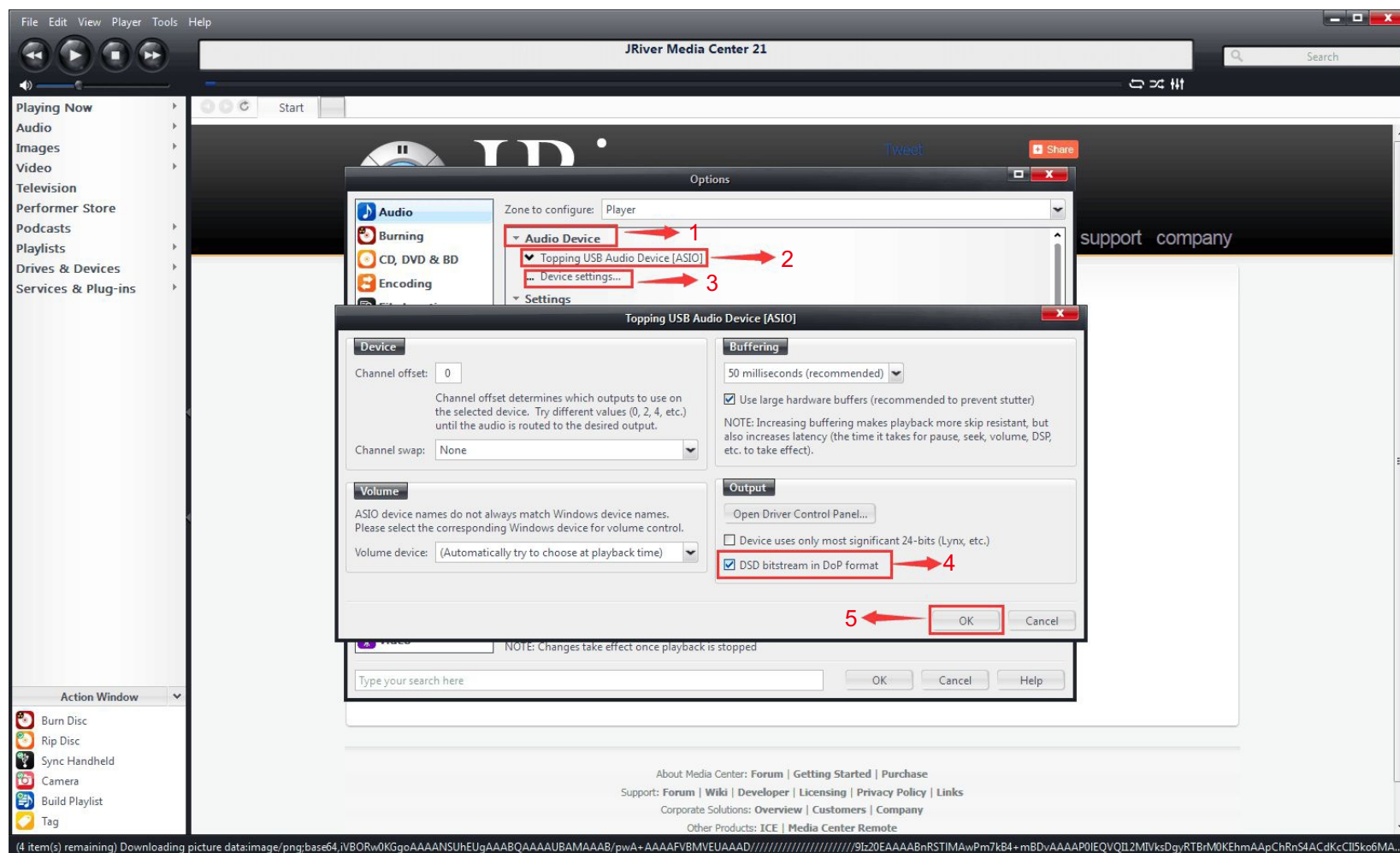
TOPPINGTM

The Settings of JRiver Player

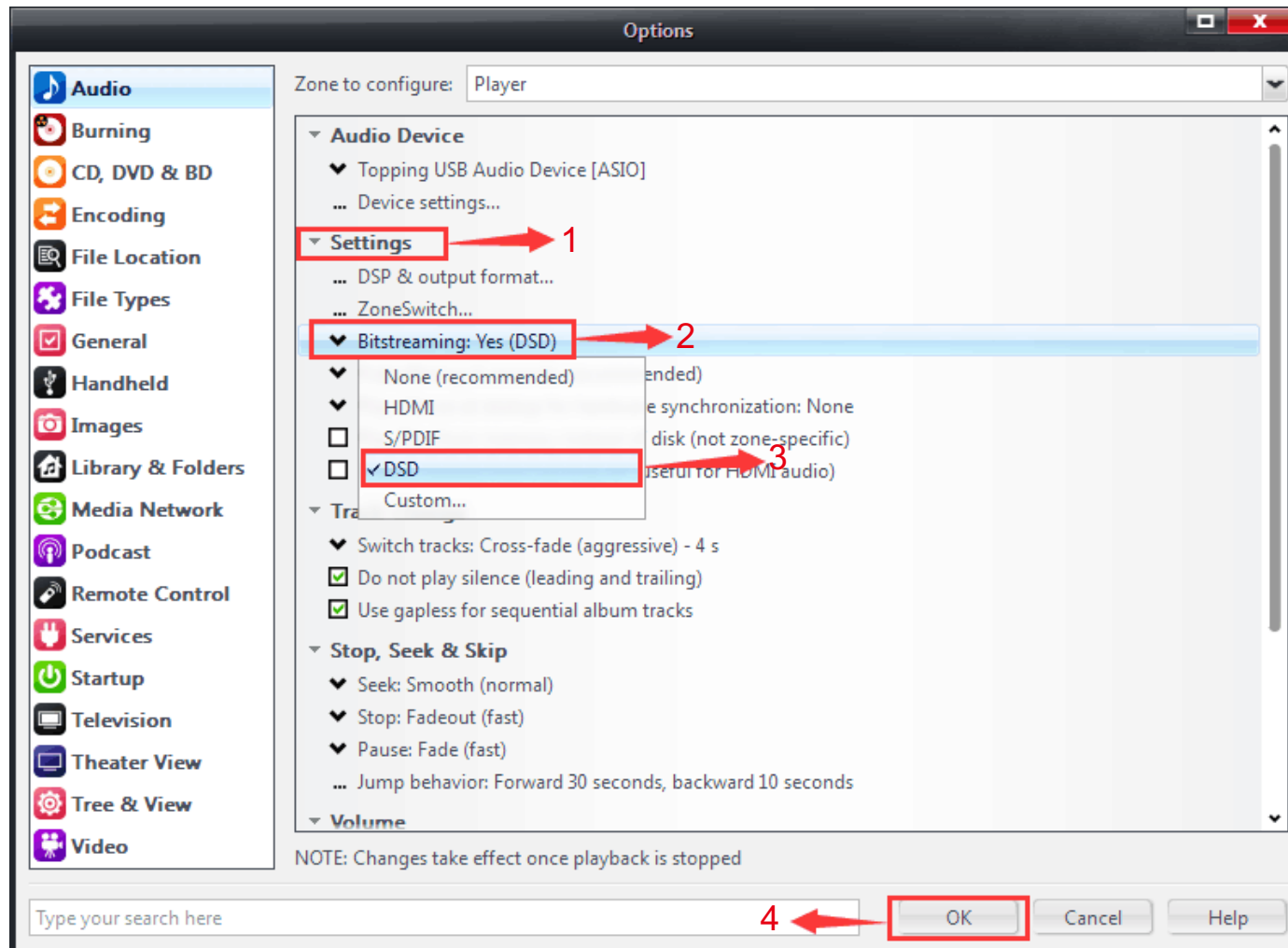
Run JRiver player, click on “Tools” → “Options” to show the window as below.



Click “Audio Device”, choose “Topping USB Audio Device [ASIO]”, click on the "Device settings", tick "DSD bitstream in DoP format"(select it or not deciding DSD Audio output format set as DOP or Native), click “OK”.



Click “Bitstreaming”, tick “DSD” options and then click “OK” to finish all settings.



TOPPINGTM

The Settings of JRiver Player